



## E-Mail Management Solutions

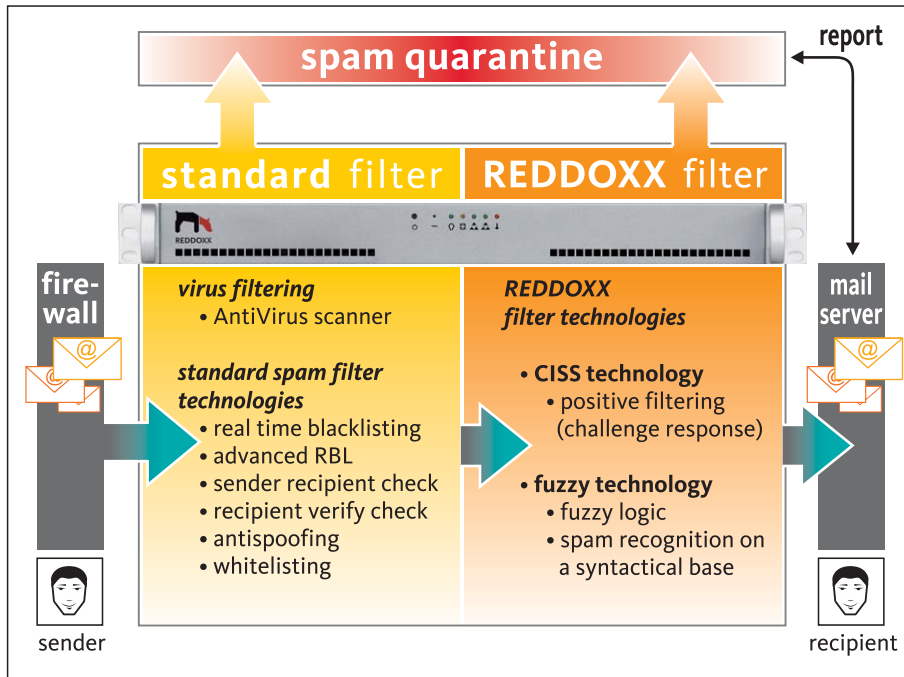
Spamfinder **100% spam protection**  
for your business

MailDepot **Compliant, permanent**  
**e-mail archiving**

MailSealer **digital signature** and  
**e-mail encryption**

# REDDOXX Spamfinder

## Anti-spam and virus protection with a profile



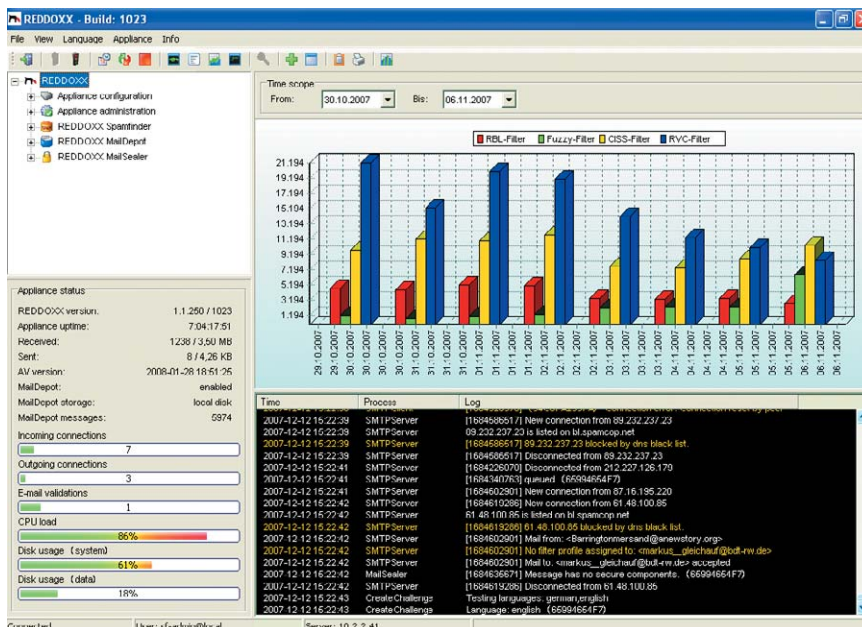
### Advantages of Spamfinder

- 100% spam free thanks to the patented CISS technology
- proactive e-mail virus protection
- significant relief to the e-mail server
- no more annoying manual sorting of e-mails
- spam filters can be adjusted for each user
- sustained reduction of spam even without CISS through 15 additional filter levels
- secure protection for your e-mail system

Spamfinder is a part of the REDDOXX appliance, which acts in bridge mode or as an independent SMTP Gateway. The filtering policies are administrated centrally and defined as profiles. The individual combination of negative and positive filters enables optimal and permanent protection against unsolicited e-mails.

The intuitive administration interface allows for quick configuration. By the help of the integrated analysis function the effectiveness of the filtering profiles can be checked anytime.

The REDDOXX Appliance provides interfaces (LDAP-Connectors) for Microsoft®-Exchange, Lotus Notes® and OpenLDAP.



*Image:*  
Administration console shows effectiveness of the filter profiles.

## 100% spam free thanks to the patented CISS filter

The **CISS filter** (Confirmation Interactive Site Server) ensures the absence of spam by only letting e-mails pass from known, verified senders. And this is how it works:

### A. e-mail from a known sender

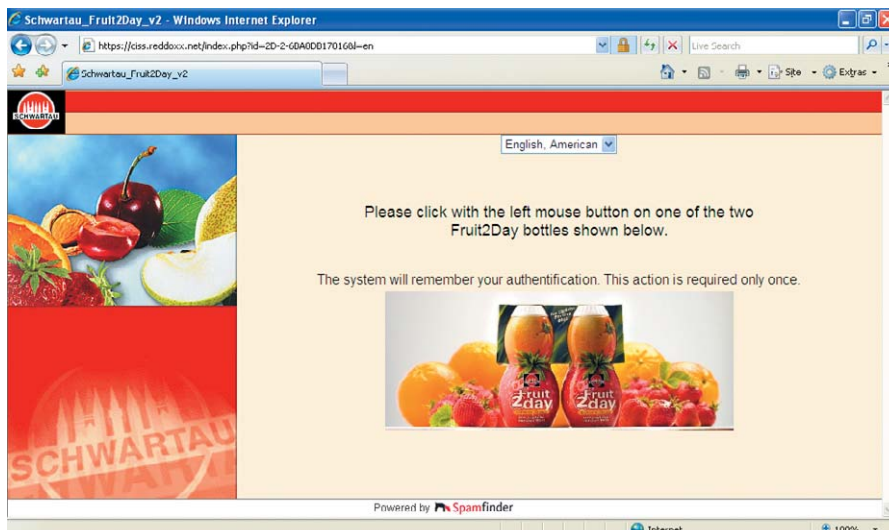
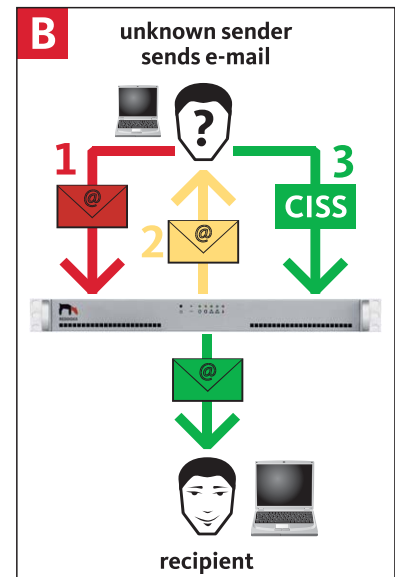
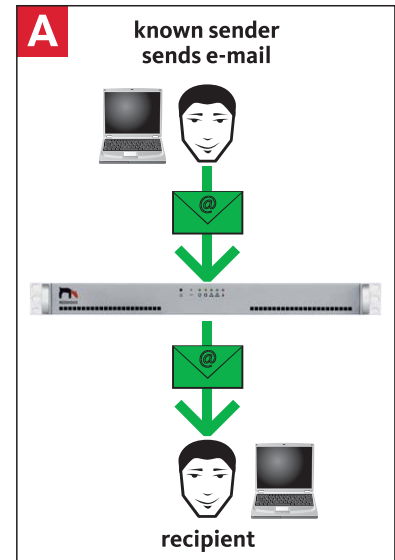
A verified sender sends an e-mail. The REDDOXX Spamfilter checks the mail for spam and viruses. Should the mail not contain any undesired features it is being forwarded to the recipient.

### B. e-mail of an unknown sender

1. The e-mail of an unknown sender reaches the REDDOXX appliance. The e-mail passes the REDDOXX spam filter first. Should the e-mail not contain any undesired features the **CISS procedure** will be initiated. The e-mail is stored temporarily on the REDDOXX appliance.
2. At the same time the unknown sender receives a REDDOXX response mail with an authorisation link. This link leads the unknown sender to the individual CISS website of your company on which he is asked to perform a simple click action. Now the sender is authorised.

The sender authorisation is only needed once and can only be performed by humans and not by automated systems.

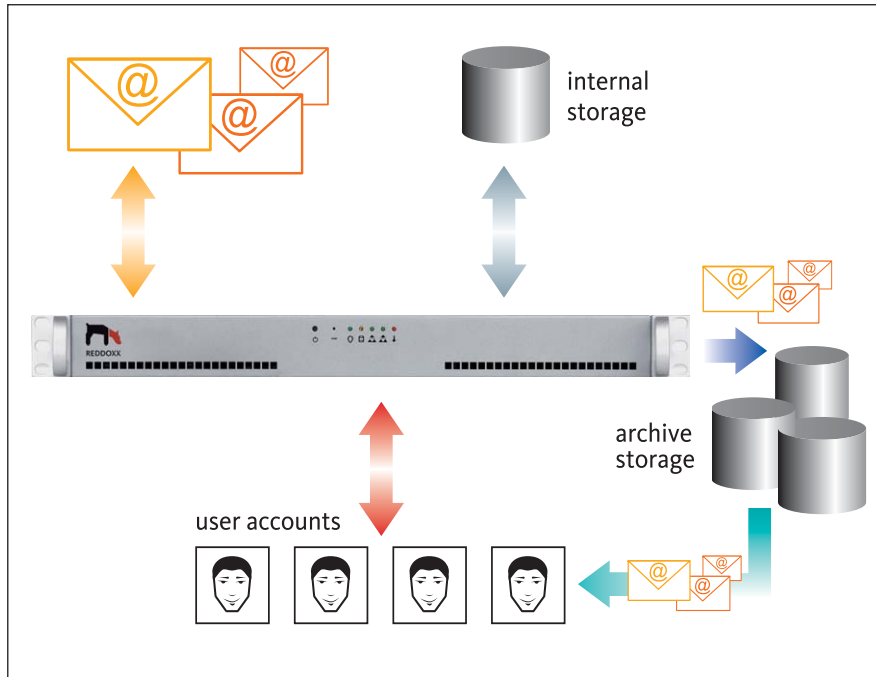
3. The REDDOXX appliance receives a verification. The temporarily stored e-mail is now forwarded to the recipient. The sender is added to the white-list and all future e-mails will be delivered instantly.



Example of an individual sender authorisation

# REDDOXX MailDepot

## The compliant e-mail archiving



### Advantages of MailDepot

- automatic and unalterable archiving
- simple recovery of accidentally or intentionally deleted e-mails
- full text indexed e-mail search
- spam can be excluded from the archive
- e-mails encrypted and decrypted by MailSealer are archived in accordance to legal requirements
- attachments are archived only once (Single Instancing)
- removal from storage and conversion is possible for each fiscal year
- integration of the user console into Microsoft Outlook

The REDDOXX MailDepot offers a cost-effective and highly efficient way to permanently archive all e-mails that are being received or sent by your e-mail servers, allowing any system to fully conform to the most complex legal requirements. This is achieved as the archive is integrated into the mailflow between the firewall and the e-mail servers, thus circumventing the archive by a user is simply not possible.

### Search

**Result**

ID	Archive time	Subject	Sender
00000...	17.01.2008 11:09:34	The Year of the Storm: A Recap of the Top Stories...	CBR Dire...
00000...	19.12.2007 11:14:46	Reduce the Risks of Social Networking Use - W...	CBR Dire...
00000...	05.12.2007 11:07:49		
00000...	26.11.2007 10:08:06		

**Preview**

Subject: Reduce the Risks of Social Networking Use - Whitepaper  
 From: CBR Direct [mailto:cbrdirect@cbronline.com]  
 Date: 19.12.2007 11:14:36  
 Tel: +49(0)30 2637 200

**CBR**

**RAY - 235 ONLINE FRIENDS DAMAGING YOUR REPUTATION... OR NOT? OR BOTH!**

Reduce the Risks of Social Networking Use - Free Whitepaper

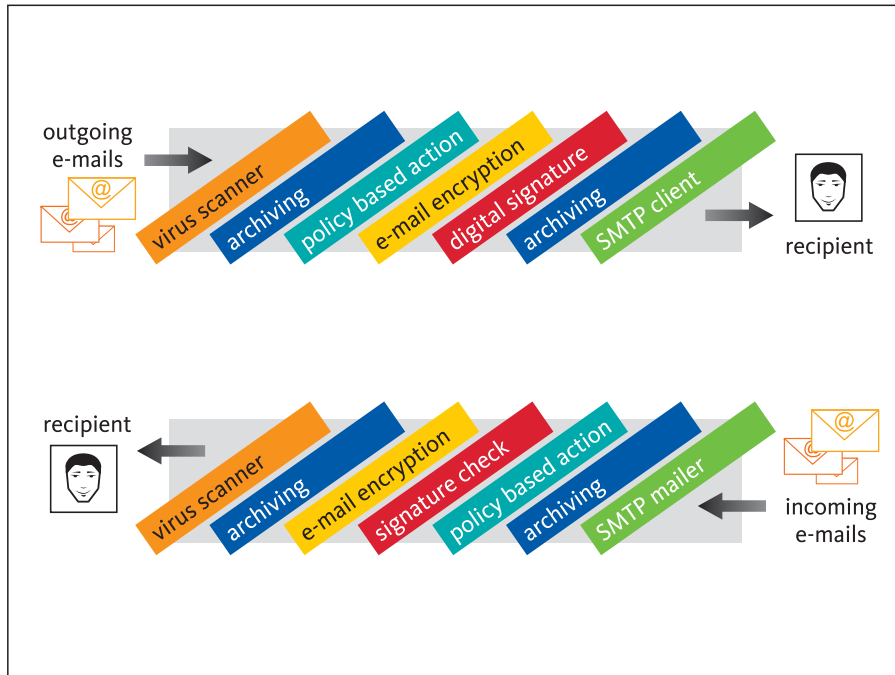
Download your copy: [link]

⇒ Delivery to inbox

simple e-mail recovery with the REDDOXX user console

# REDDOXX MailSealer

## E-mail encryption and digital signature according to international standards



### Advantages of MailSealer

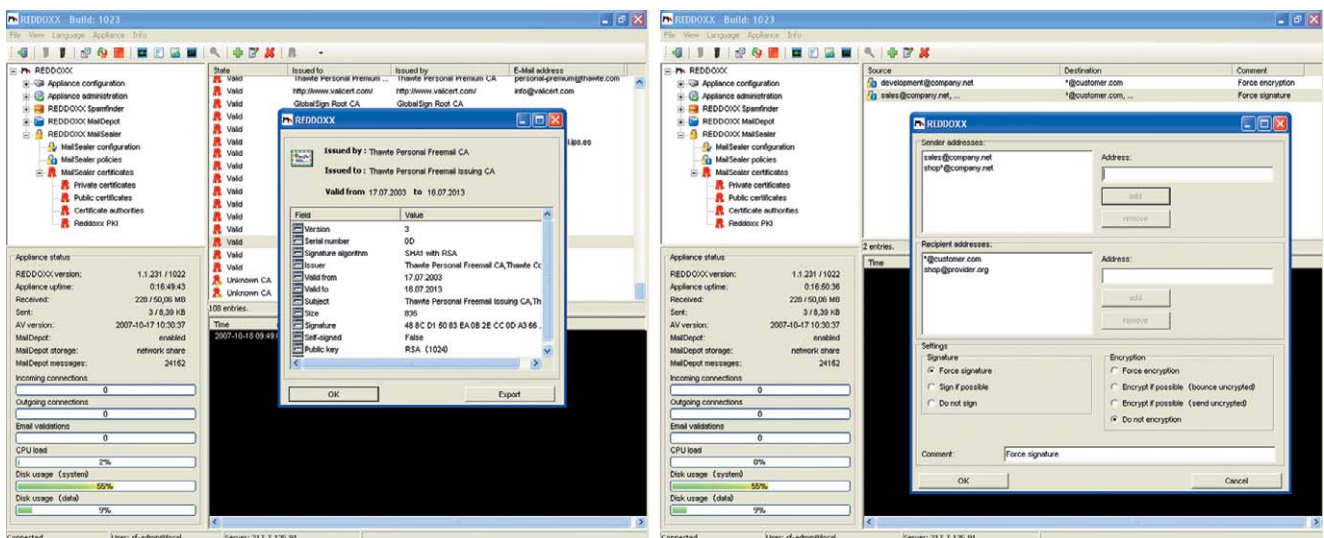
- supports **S/MIME**, **OpenPGP** and **REDDOXX passphrase (MailSealer Light)**
- encryption and digital signature are carried out centrally in accordance with the security policies of your company.
- policies flexibly definable
- simple key and certificate management
- compliance ready archiving of encrypted and decrypted e-mails with REDDOXX MailDepot
- virus scan also available for encrypted e-mails

REDDOXX MailSealer is an addition to the existing e-mail infrastructure, that signs and encrypts outgoing e-mails and respectively checks and decrypts incoming e-mails.

MailSealer supports the two internationally established encryption standards - S/MIME and OpenPGP.

MailSealer is thus compatible to the existing solutions of your communication partners. You can communicate freely and securely.

MailSealer encrypts and signs all e-mails centrally and automatically - without any input by the user.

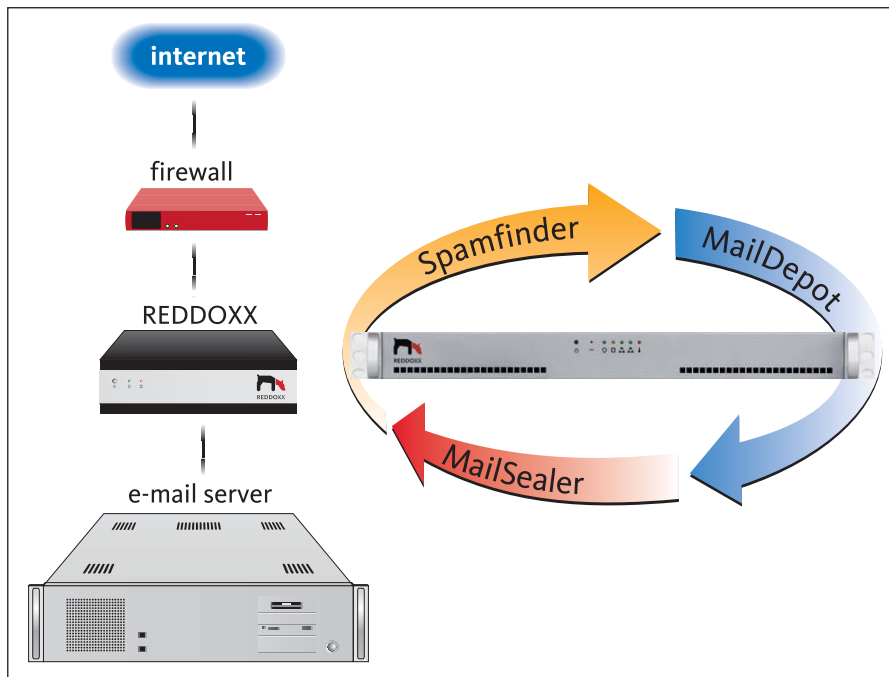


Management of the certificates

Configuration of the MailSealer policies

# REDDOXX Appliance

## The all-in-one solution for perfect e-mail management



### Advantages of REDDOXX

- 100% spam protection through patented technology
- automatic and unalterable archiving of all e-mails
- protected communication thanks to encryption and digital signature
- proactive e-mail virus protection
- product of a German manufacturer
- compatible with SMTP, POP3 and combined environments
- freely configurable all-in-one solution

The REDDOXX appliance is an independent entity in the network that covers the essential aspects of e-mail management. The REDDOXX appliance means a significant relief to your mail server by filtering out 100% of the incoming spam mails.

In order to achieve best results the REDDOXX appliance should be established directly after the firewall and be able to accept e-mails without any delay. The REDDOXX appliance acts as an e-mail server in SMTP Mode to the outside as well as to the inside. In POP3 environments the appliance can be used in bridge mode.

The REDDOXX appliance can also be used as a virtual appliance in VMware environments.

Depending on the number of users in your company the size of the REDDOXX appliance can be chosen freely. By the help of interfaces (LDAP-connectors) for Microsoft®-Exchange, Lotus Notes® and OpenLDAP the REDDOXX appliance can be integrated into all common IT environments.

### REDDOXX product line:

REDDOXX **Basic** (<50 users)



REDDOXX **Entry** (<100 users)



REDDOXX **SMB** (<250 users)



REDDOXX **Medium** (<750 users)



REDDOXX **Enterprise**  
(unlimited)



All products are also available as  **vmware**

[WWW.REDDOXX.COM](http://WWW.REDDOXX.COM)